



RACCORDI
UNIONS
RACCORDS
RACORES



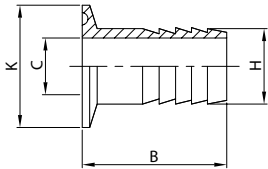
CLAMP

PORTAGOMMA E. SM.
HOSE ADAPTOR E. FR.
PORTE CAOUTCH. B. FR.
M. MANGUERA E. SM.

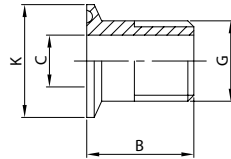
SEMIRACCORDO EF. GAS
BSP ADAPTOR
FERRULE BF. GAZ
ENLACE ROSCA GAS

TAPPO
SOLID END CAP
BOUCHON
TAPÓN

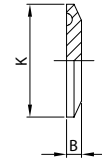
K14 RHA



K14 BSPM



K16



DN	B	C	H	K	gr
1/2" 12	38,1	9,5	13,7	25,0	26
3/4" 19	38,1	15,7	21,3	25,0	40
1" 25	42,9	20,6	25,4	50,5	70
1 1/2" 38	42,9	33,3	38,1	50,5	140
2" 51	58,7	46,0	50,8	64,0	250
2 1/2" 63	59,5	58,7	63,5	77,5	370
3" 76	78,6	72,0	76,2	91,0	505
4" 101	86,5	97,4	101,6	119,0	685

DN	B	C	G	K	gr
1" 25	30,0	21,7	1"	50,5	70
1 1/2" 38	32,0	34,4	1 1/2"	50,5	140
2" 51	36,0	47,1	2"	64,0	250
2 1/2" 63	39,0	59,8	2 1/2"	77,5	370
3" 76	46,0	72,5	3"	91,0	505
4" 101	56,0	96,7	4"	119,0	685

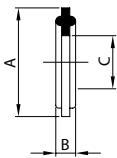
DN	B	K	gr
1/2" 12	4,7	25,0	16
3/4" 19	4,7	25,0	16
1" 25	6,4	50,5	70
1 1/2" 38	6,4	50,5	70
2" 51	6,4	64,0	140
2 1/2" 63	6,4	77,5	200
3" 76	6,4	91,0	410
4" 101	7,9	119,0	570
5" 127	11,0	144,4	1.400
6" 152	13,0	166,0	2.200
8" 203	13,0	217,0	3.700

GUARNIZIONE
GASKET
JOINT
JUNTA

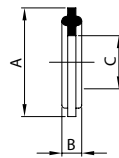
GUARNIZIONE A BUSTA
ENVELOPE GASKET
JOINT À ENVELOPPE
JUNTA DE SOBRE

GUARNIZIONE A LABBRO
LIP GASKET
JOINT À LÈVRE
JUNTA DE REBORDE

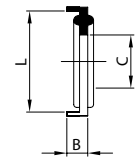
K40



K40 TE



K39



DN	A	B	C
1/2" 12	21,8	4,5	10,0
3/4" 19	21,8	4,5	16,5
1" 25	50,5	5,3	23,2
1 1/2" 38	50,5	5,3	36,2
2" 51	64,0	5,3	49,2
2 1/2" 63	77,5	5,3	60,5
3" 76	91,0	5,3	73,1
4" 101	119,0	5,3	97,6
4" 104	119,0	5,3	100,0
5" 127	144,4	5,3	121,0
6" 152	166,0	5,3	146,4
8" 203	217,0	5,3	194,2

DN	A	B	C
1" 25	50,5	5,3	23,2
1 1/2" 38	50,5	5,3	36,2
2" 51	64,0	5,3	49,2
2 1/2" 63	77,5	5,3	60,5
3" 76	91,0	5,3	73,1
4" 101	119,0	5,3	97,6
4" 104	119,0	5,3	100,0

DN	B	C	L
1" 25	4,5	23,2	50,5
1 1/2" 38	4,5	36,2	50,5
2" 51	4,5	49,2	64,0
2 1/2" 63	4,5	60,5	77,5
3" 76	4,5	73,1	91,0
4" 101	4,5	97,6	119,0
4" 104	4,5	100,0	119,0
5" 127	4,5	124,2	144,4
6" 152	4,5	147,5	166,8
8" 203	4,5	198,2	218,0